

Ballscrews

Accessory

2.4.2.2 Supported bearing SLA

The stage height of the supported bearing is matched to the fixed bearing SFA (page 108) and to the nut housing GFD (page 111). The pillow block can be fixed from the top (S1) and bottom (S2).

The stop edge facilitates alignment of the unit. The correct end machining for the supported bearing is type S5-xx (page 105).

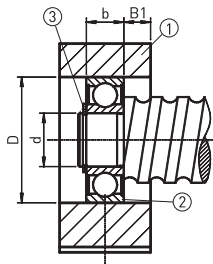
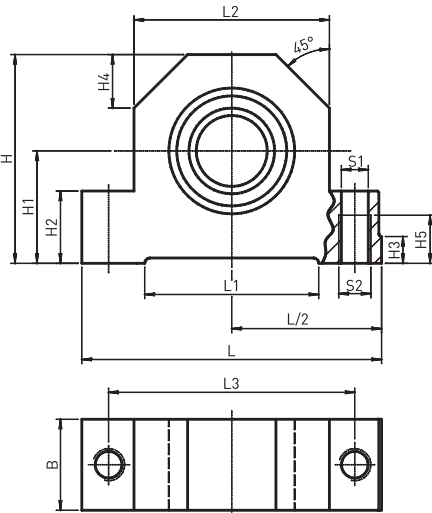


Table 2.28 Dimensions of the bearing

Article number	Spindle Ø	L	L/2 js9	L1	L2	L3	H	H1 JS7	H2	H3	H4	H5	b
SLA - 06	12	62	31	34	38	50	41	22	13	5	11	9	6
SLA - 10	16	86	86	52	52	68	58	32	22	7	15	15	9
SLA - 12	20	94	47	52	60	77	64	34	22	7	17	15	10
SLA - 17	25	108	54	65	66	88	72	39	27	10	19	18	12
SLA - 20	32	112	56	65	73	92	78	42	27	10	20	18	14
SLA - 30	40	126	63	82	84	105	92	50	32	13	23	21	16
SLA - 40	50	146	73	82	104	125	112	60	32	13	30	21	18

Table 2.29 Dimensions of the bearing

Article number	Spindle Ø	B	B1	S1 H12	S2	d	D H6	Circlip DIN 471	Deep-groove ball bearing DIN 623
SLA - 06	12	15	4,5	5,3	M6	6	19	6 × 0,7	6206.2RS
SLA - 10	16	24	7,5	8,4	M10	10	30	10 × 1	6200.2RS
SLA - 12	20	26	8	8,4	M10	12	32	12 × 1	6201.2RS
SLA - 17	25	28	8	10,5	M12	17	40	17 × 1	6203.2RS
SLA - 20	32	34	10	10,5	M12	20	47	20 × 1,2	6204.2RS
SLA - 30	40	38	11	12,6	M14	30	62	30 × 1,5	6206.2RS
SLA - 40	50	44	13	12,6	M14	40	80	40 × 1,75	6208.2RS